

MONTANA COUNTIES SOIL CLIMATE NETW1ORK



April 26, 2002



Toole County Producer



Liberty County

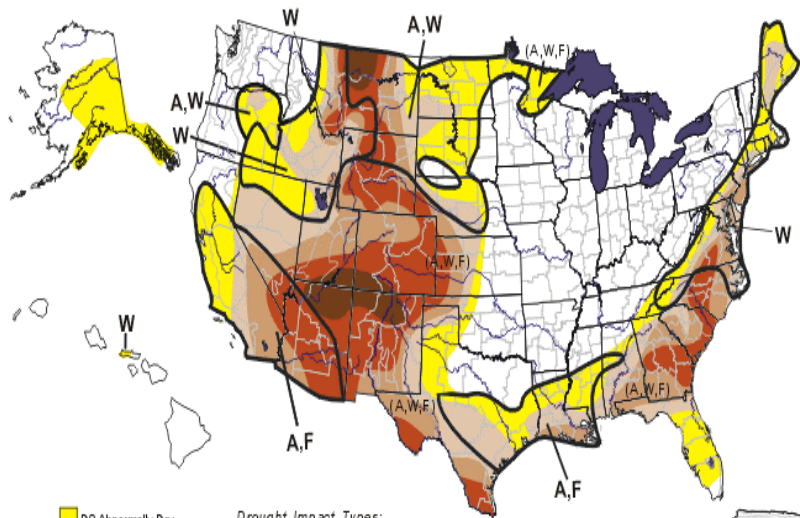


Chouteau County



“So, Does a One Time Sudden Event End Drought?”

U.S. Drought Monitor June 4, 2002 Valid 8 a.m. EDT



- D0 Abnormally Dry
 - D1 Drought—Moderate
 - D2 Drought—Severe
 - D3 Drought—Extreme
 - D4 Drought—Exceptional
- Drought Impact Types:**
 A = Agriculture
 W = Water (Hydrological)
 F = Fire danger (Wildfires)
 / Delineates dominant impacts
 (No type = All 3 impacts)

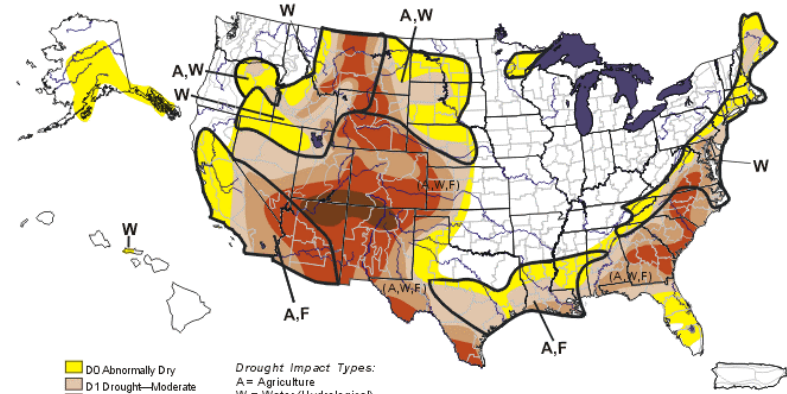
The Drought Monitor focuses on broad-scale conditions. Local conditions may vary. See accompanying text summary for forecast statements.

<http://drought.unl.edu/dm>



Released Thursday, June 6, 2002
 Author: Douglas Le Comte, NOAA/CPC

U.S. Drought Monitor June 11, 2002 Valid 8 a.m. EDT



- D0 Abnormally Dry
 - D1 Drought—Moderate
 - D2 Drought—Severe
 - D3 Drought—Extreme
 - D4 Drought—Exceptional
- Drought Impact Types:**
 A = Agriculture
 W = Water (Hydrological)
 F = Fire danger (Wildfires)
 / Delineates dominant impacts
 (No type = All 3 impacts)

The Drought Monitor focuses on broad-scale conditions. Local conditions may vary. See accompanying text summary for forecast statements.

<http://drought.unl.edu/dm>



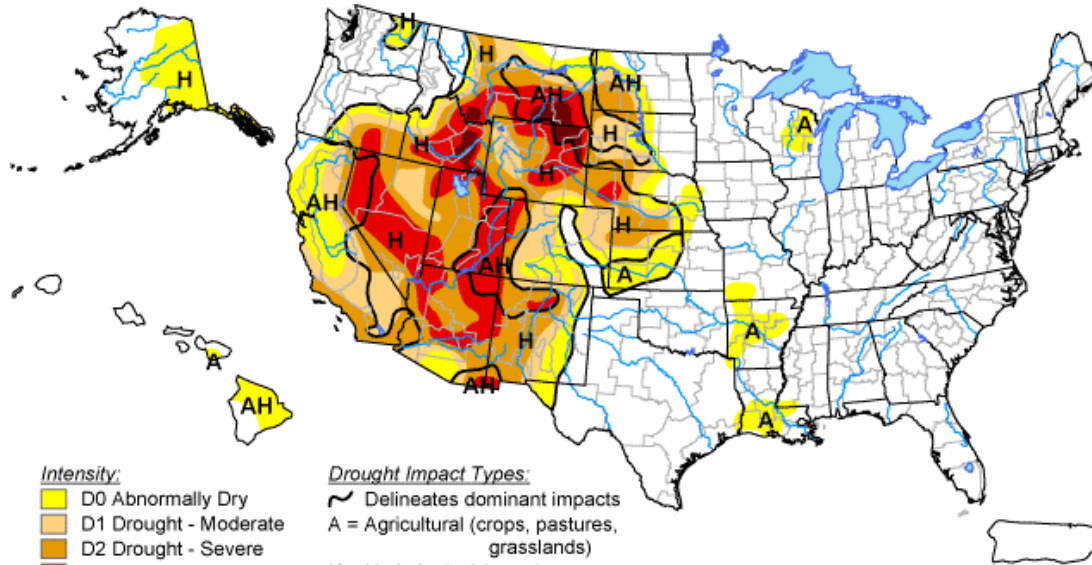
Released Thursday, June 13, 2002
 Author: Douglas Le Comte, NOAA/CPC

September 2004




U.S. Drought Monitor

September 21, 2004


Valid 8 a.m. EDT



Intensity:

-  D0 Abnormally Dry
-  D1 Drought - Moderate
-  D2 Drought - Severe
-  D3 Drought - Extreme
-  D4 Drought - Exceptional

Drought Impact Types:

-  Delineates dominant impacts
- A = Agricultural (crops, pastures, grasslands)
- H = Hydrological (water)
- (No type = Both impacts)

The Drought Monitor focuses on broad-scale conditions. Local conditions may vary. See accompanying text summary for forecast statements.

<http://drought.unl.edu/dm>

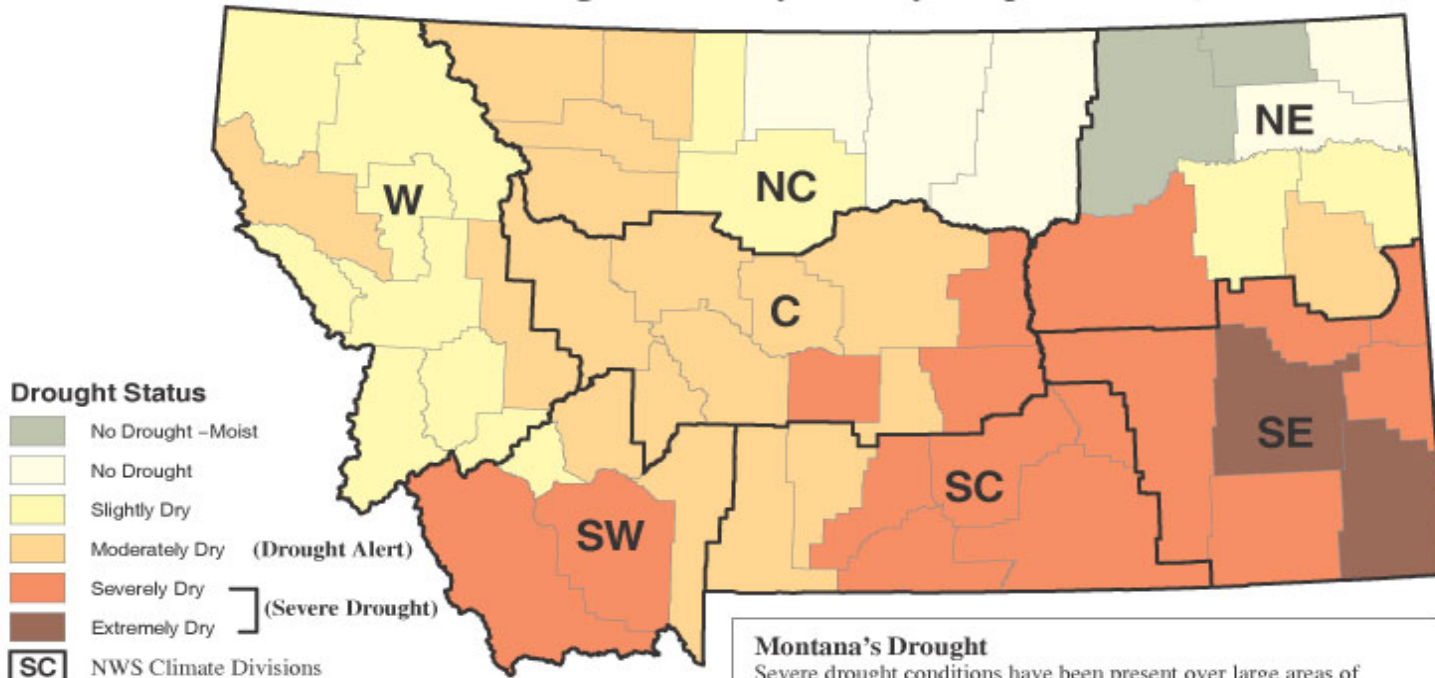


Released Thursday, September 23, 2004
Author: Brad Rippey, U.S. Department of Agriculture

Montana Drought Map

September 2004

Montana Drought Status by County –September 16, 2004



Drought Alert –Governor’s Drought Advisory Committee strongly encourages local officials to convene local drought committees.

Severe Drought –Local officials should have local drought planning efforts underway or should reconvene the local drought committee at the earliest opportunity.

For recommended responses, see the Drought Response Plan.

Montana’s Drought

Severe drought conditions have been present over large areas of Montana for four or more consecutive years. Long-term drought impacts, including low soil moisture, reservoir storage, groundwater, and forest fuel moisture levels, continue to exist in areas where short-term relief may be present or develop.

The Governor’s Drought Advisory Committee determines a monthly drought status for counties between March and October. The drought status map is used to alert counties to drought conditions so they may respond appropriately.

For more information regarding the determination of the drought status or the activities of the Drought Advisory Committee visit: <http://nris.state.mt.us/drought/>



DRAFT

MONTANA COUNTIES SOIL CLIMATE NETWORK

- **INITIATIVE STARTED IN 2001**
- **WHY?**
- **COUNTY FUNDED**
- **COUNTIES INVOLVED:**

Yellowstone County – 3 stations; Toole County – 5 stations; Stillwater County – 5 stations; Pondera County – 5 stations; Liberty County - 5 stations; Hill County – 5 stations; Fergus County – 5 stations; Chouteau County – 5 stations; Cascade County – 5 stations; Carbon County – 5 stations; Golden Valley – 1 station; Glacier County – 5 stations; Sweetgrass County 1 station; Musselshell/ Golden Valley 2 stations and 6 soil moisture sites. Custer County – 4 stations

- **EXISTING NWS WEATHER COOP STATIONS COLLECT:**
 - **TEMPERATURE- MINIMUM & MAXIMUM**
 - **PRECIPITATION- 24 HOUR AMOUNTS**

MCSCN PROJECT WILL COLLECT DATA WITH AUTO-MATED

DAVIS INSTRUMENTS.

USED WORLD WIDE BECAUSE OF THEIR ACCURACY AND COMPETITIVE PRICING.

DAVIS WEATHER STATIONS WILL SUPPLEMENT EXISTING NWS WEATHER STATIONS

- **THESE NEW WEATHER STATIONS WILL RECORD THE FOLLOWING IN ADDITION TO THE TEMPERATURE AND DAILY PRECIPITATION:**

- **HUMIDITY DEW POINT**
- **WIND SPEED & DIRECTION**
- **SOLAR RADITION UV INDEX**
- **SOIL TEMPERATURE**
- **SOIL MOISTURE AT VARIOUS DEPTHS**
BAROMETER & EVAPOTRANSPIRATION
- **ON A CURRENT, DAILY, MONTHLY & YEARLY BASIS**

MONTANA COUNTIES SOIL CLIMATE NETWORK



- **DATA COLLECTED WILL GO TO CENTRAL SITE.**
 - MOST LIKELY **MESOWEST** AT UNIVERSITY OF UTAH
- **mcscn.com**
 - WEBSITE CURRENTLY SENDING DATA TO
- **A STEERING COMMITTEE HAS BEEN FORMED TO DIRECT MCSCN PROJECT AND LOOK FOR FUNDING THROUGH GRANTS AND OTHER PROGRAMS. ALSO TO MAINTAIN STANDARDS SET BY MCSCN PROJECT**
- **DEVELOP TOOLS FOR LAND MANAGERS AND RANGE SPECIALISTS**

GOAL:

- **GIVE PRODUCERS, GOV AGENCY'S, OR ANYBODY ACCESS TO USABLE WEATHER AND SOIL DATA AND CLIMATES.**
- **USE DATA FOR DROUGHT DETERMINATIONS AND TO HELP GAIN GOVERNMENT ASSISTANCE FOR:**
 - **ECP PROGRAMS AND DISASTER AID**